

# BSG TRAINING NEWS



Training Update Spring 2018



## THIS MONTH'S ISSUE

### INCLUDES:

#### Training news

- Everything you need to know about CITB's new grant scheme
- Preparing for the new PPE regime
- Construction stand-down targets mental health
- BSG Bytes
- BSG risk assessment and method statements course
- Teen apprentice fell 4m from scaffolding
- Company fined following unlicensed asbestos removal from primary school
- BSG reports 16% increase in excavation work breaches on construction sites
- BSG training venues
- Meet the training team
- BSG podcasts
- Training courses starting soon

## EVERYTHING YOU NEED TO KNOW ABOUT CITB'S NEW GRANT SCHEME

The Construction Industry Training Board (CITB) will be introducing its new Training Model and Grant Scheme on the 01 April 2018. CITB's new Grant Scheme will enable firms to receive automated grant payments, axe red tape and ensure much needed training grants reach SMEs and micro firms in particular. The change came after CITB announced their new Vision 2020, which it is hoped will modernise and repurpose the construction industry's training body. Following this, BSG has prepared an article on all of the changes you need to be aware of.

### WHY HAS THE CITB GRANTS SCHEME BEEN REVISED AND UPDATED?

CITB identified through research and insight over the past few years that employers of all sizes have experienced issues with the current grants scheme, including the complexity of the mechanism to claim grants, what it supports and needing greater support to deal with the skills gaps and shortages in the industry.

The CITB also recognised that it needed to provide a greater focus on activities that directly support construction skills and training.



5 Pinkers Court, Briarlands Office Park, Gloucester Road, RudgeWay, Bristol, BS35 3QH  
Tel: 0300 304 9050 Fax: 01454 415388 Email: [info@bsgltd.co.uk](mailto:info@bsgltd.co.uk)

FOLLOW



DOWNLOAD OUR 2018  
TRAINING SCHEDULES

## EVERYTHING YOU NEED TO KNOW ABOUT CITB'S NEW GRANT SCHEME CONT...

As a result, the CITB will aim to:

- Support Apprenticeships as a high priority to increase new talent entering the industry
- Provide continued and improved support for higher qualifications including higher apprenticeships
- Make the process of receiving grants simpler, quicker and more transparent and by doing so ensure that smaller firms are supported
- Help to address skills issues by identifying areas of industry need and providing greater Grants Scheme support
- Support employers to train their construction related workforce, including the supply chain, to industry agreed standards making the skills more portable between employers

### WHAT ARE THE CHANGES?

In response to a recent government review and industry consultation, the CITB will be altering the way they provide training support to the construction industry. Part of this change will include a newly developed list of training programmes, qualifications, courses and standards applicable for grant funding, which will come into effect on the 01 April 2018. These can be viewed on the new Construction Training Directory.

Organisations will also see a number of areas change throughout the grants scheme, which is also launching on the 01 April 2018. Below we will provide an overview of these changes. The changes include automating the payment of grants for short duration courses, when CITB receives information on the training outcomes. When this is introduced, it will remove the need to submit Training Plans.

CITB have also confirmed that Supplementary Grant payments will be withdrawn from the 01 April 2018. Supplementary Grant payments have been paid to employers in the past for submitting their Levy Return on time.

From 01 April 2018 Grants Scheme support will be paid primarily for:

- Apprenticeships
- Qualifications
- Short Duration Courses that have defined training outcomes

### Funding custom-built solutions

Get funding to build the training solutions you need to achieve your business goals

Apply for funding

WHAT'S  
YOUR  
GOAL?

### THE CONSTRUCTION TRAINING DIRECTORY

The Training Directory is a searchable online directory of construction training courses, tests and qualifications delivered by Approved Training Organisations (ATOs) to defined training standards that have been developed with input from industry. All training provisions published in the Directory will be eligible for grant funding. Employers can choose a provider based on location, price and timing, making it easy to select a course that best meets their needs.

An ATO is an organisation delivering construction training courses and qualifications to a defined training standard, who have successfully completed the CITB approval process.

On successful completion of a course, an ATO will confirm the learner's achievement, upload the details onto the Construction Training Register, thereby triggering the automated grant process. This will speed up the payment process and remove the need for employers to complete paperwork.

The Building Safety Group is an ATO, therefore employers are able to receive grants after a learner has successfully completed some of our courses.



### Approved Training Organisation Status

There is also a Construction Training Register, which is an online register that holds individuals' transferable, construction training courses and qualifications achievements. Over time, it will build a comprehensive picture of skills training across Great Britain. It easily allows employers to be able to check the skills and competence of their workforce and new recruits, helping to confirm they have the right skills and improve productivity.



# EVERYTHING YOU NEED TO KNOW ABOUT CITB'S NEW GRANT SCHEME CONT...

## GRANT FUNDING FOR APPRENTICESHIPS

Level 2 (Intermediate) Apprenticeship

Off-the-job attendance grant – year 1 = £1,965

Off-the-job attendance grant – year 2 = £1,660

Achievement grant = £2,375.

Total = £6,000

Level 3 (Advanced) Apprenticeship

Off-the-job attendance grant = £1,125

Achievement grant = £3,125

Total = £4,250

Level 4 and above (Higher and Degree) Apprenticeship

Off-the-job attendance grant = £1,125 per year

Achievement grant = £3,125

Total = £5,375 – £7,625 (typical range)

Grant payments will be paid in quarterly instalments irrespective of the actual number of days spent training off the job.

## GRANT FUNDING FOR QUALIFICATIONS

The grant scheme will provide funding for a wide range of qualifications that can be over a short-period or a long-period/extended-period.

Longer duration courses that have a minimum of 30 days recommended classroom training and coursework, and an agreed duration of one year or more can receive an attendance grant of £1,125 and an achievement grant of £1,875.

While a course taking place over a short duration that has less than 30 days recommend classroom training and course work, and an agreed duration of less than one year can attract a grant of £600 once the course has been completed.

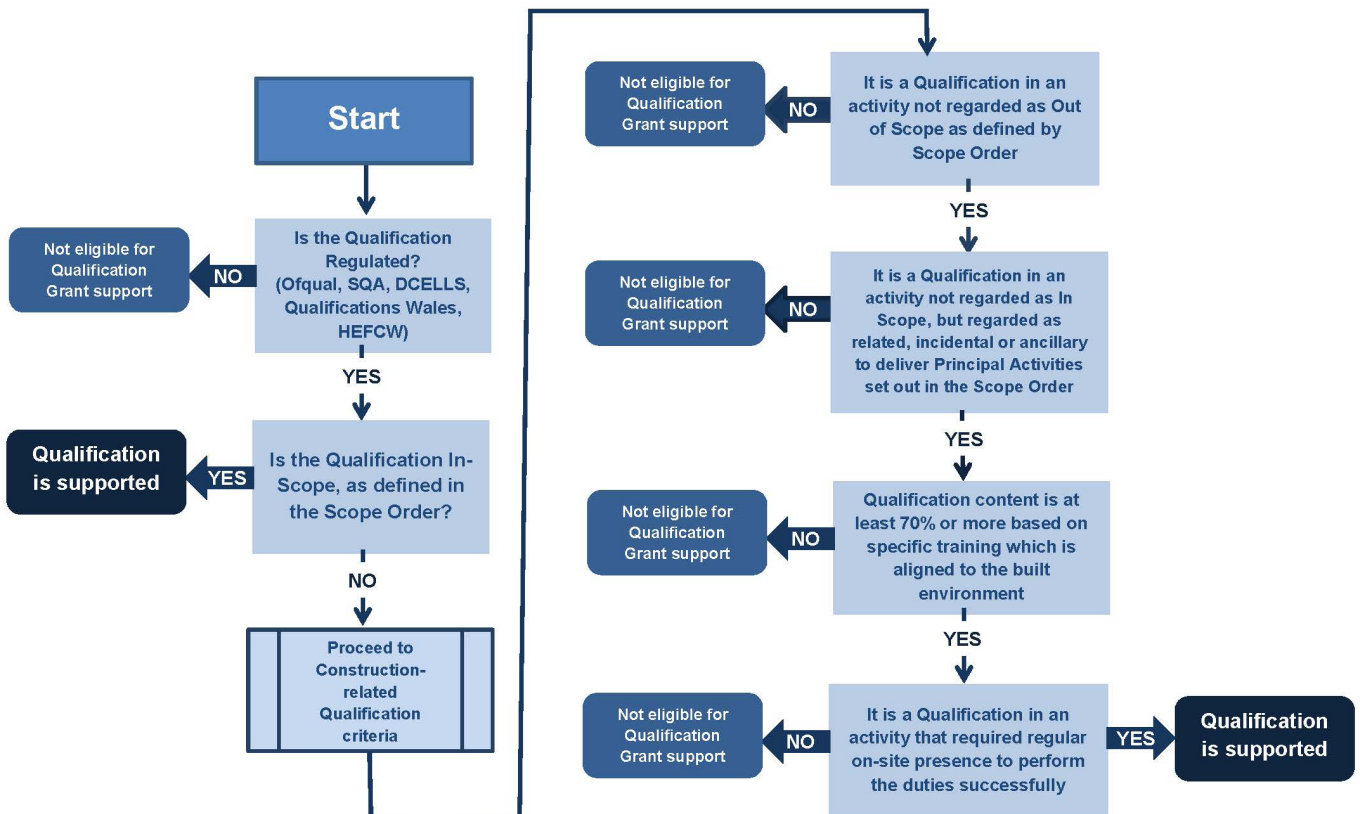
The CITB has developed an evaluation criteria to ensure consistency in determining what is, and is not supported by the Grants Scheme.

Please view the criteria below:

### What will be supported?

Based on the criteria below, qualifications, higher and degree Apprenticeships in the following activities are examples likely to be supported, however actual courses are yet to be reviewed:

- Architecture
- Building Conservation
- Building Site Management
- Building Studies
- Built Environment
- Civil and Structural Engineering
- Construction Management
- Construction Practice
- Construction Project Management
- Construction Site Management
- Construction CAD design
- Quantity Surveying
- Surveying



# EVERYTHING YOU NEED TO KNOW ABOUT CITB'S NEW GRANT SCHEME CONT...

This grant pays for the achievement of approved short-period qualifications in core construction skills. These include:

- NVQ and SVQ Levels 2 and above
- National Examination Board in Occupational Safety and Health (NEBOSH) National Certificate in Construction Health and Safety

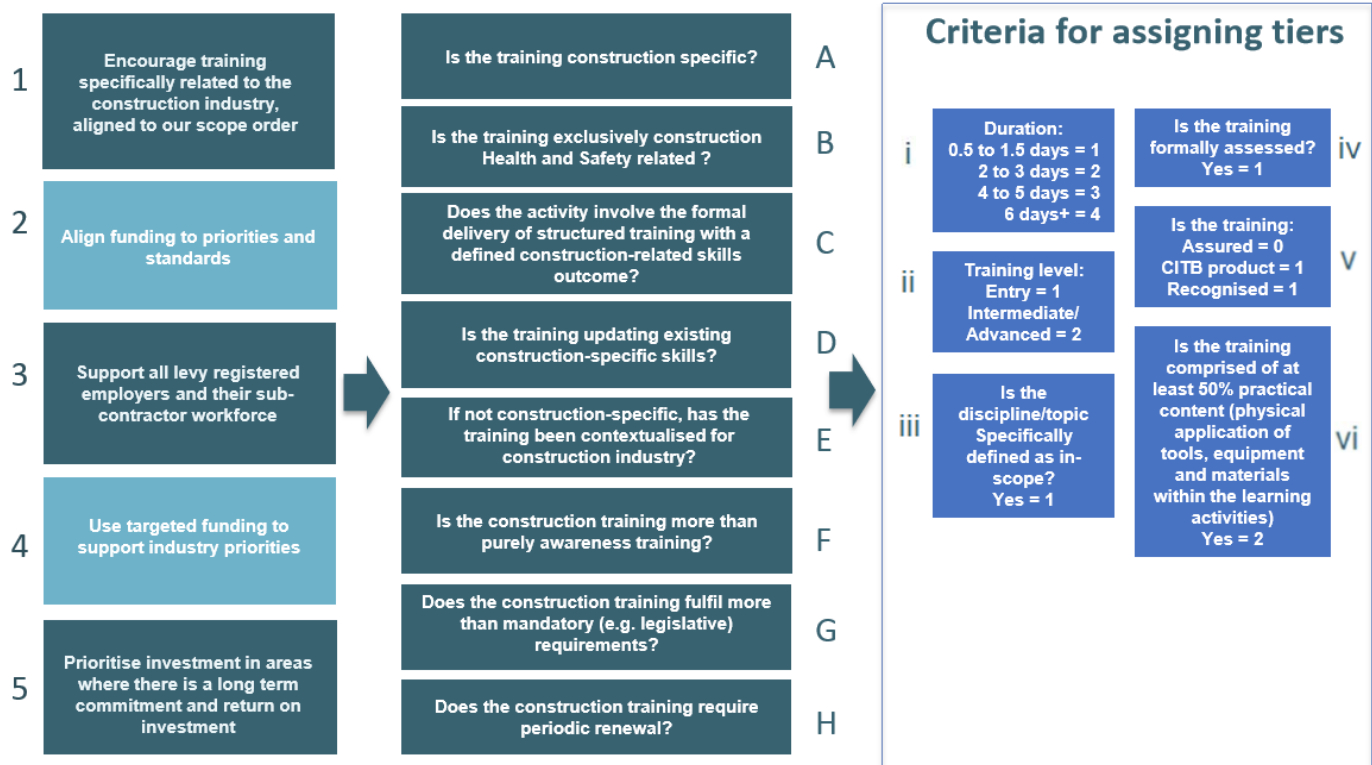
## GRANT FUNDING FOR SHORT DURATION TRAINING COURSES

A short training course must have a duration between three hours and 29 days and will be construction trade or skill specific or could also be health and safety, supervisory or management

related training. The course cannot be a part of a formal qualification (including apprenticeships) and needs to have agreed standards and assessment criteria. A number of short duration training courses will attract grant achievement payments, these have been broken down into three tiers and to the amounts of £30, £70 or £100.

Tier allocation will be based on rating each course against the criteria given below.

Please click here to view a full list of courses which are eligible: <https://www.citb.co.uk/en-GB/Qualifications-Standards/Training-standards/short-courses-standards/>



## RENEWAL COURSES

Renewals involve the repetition of a full course. If the course requires your worker to renew their training after a specified time, you can claim a full grant for it, provided that it's completed within that time period. You can only claim once for renewal training within the associated time period.

## SUBMITTING A REQUEST FOR A TRAINING NEED TO BE REVIEWED FOR ADDITION TO THE APPROVED LIST

If you believe a portable construction-related skill is not covered by the initial list of course titles, you will be able to submit details of the skill for review by CITB and Industry to determine grant eligibility. This will be managed through the CITB website and the process will be live in January 2019.

## PAYMENT OF GRANT SUPPORT TO THE EMPLOYER

If you book a Short Duration Course with a training provider that has published the course details on the Training Directory, then your grant payment will be automated on successful completion of the course.

If your training organisation is not on the Training Directory but you are booking courses with similar titles to the approved list of training titles, then there will be a transitional arrangement where you will be able to claim grant. This will only be in place on a temporary basis, until CITB are confident that all training organisations have had time to apply to be an approved training organisation and carry out the necessary quality checks.

The detail on the transitional arrangement is under development, and will be shared online and at the next wave of employer forums scheduled in February and March 2019.

## EVERYTHING YOU NEED TO KNOW ABOUT CITB'S NEW GRANT SCHEME CONT...

WHERE CAN EMPLOYERS GET FURTHER INFORMATION, ADVICE AND GUIDANCE?

If you require any more information or guidance please contact BSG's training department on 0300 304 9080 or email [training@bsgltd.co.uk](mailto:training@bsgltd.co.uk)

Please click here to find out how to claim and how many claims are allowed for:

Apprentices: <https://www.citb.co.uk/grant/new-grants-scheme-2018/apprenticeships-grant/>

Short qualifications: <https://www.citb.co.uk/grant/new-grants-scheme-2018/short-period-qualifications-grant/>

Plant training grants: <https://www.citb.co.uk/grant/new-grants-scheme-2018/plant-training-grant/>

Long qualifications: <https://www.citb.co.uk/grant/new-grants-scheme-2018/long-period-qualifications-grant/>

Short courses: <https://www.citb.co.uk/grant/new-grants-scheme-2018/short-duration-course-achievements-grant/>

Construction work experienced grants: <https://www.citb.co.uk/grant/new-grants-scheme-2018/construction-work-experience-grants/>

Please click here to view the new grant scheme rules from 01 April 2018 - <https://www.citb.co.uk/grant/new-grants-scheme-2018/grant-scheme-rules/>

## BSG HEALTH & SAFETY DOCUMENTATION NOTICE

Please note, an email has been sent to BSG members notifying people of the changes that have been made to our Health and Safety documentation.

All of BSG's Health and Safety documents can be found in the [Secure Area](#) for members or by logging into [BSG Online](#).

The Health and Safety documentation has been updated as part of our annual check for changes current legislation and innovations in best practice.



## PREPARING FOR THE NEW PPE REGIME



Construction companies need to ensure their equipment remains compliant under the new EU PPE Regulation coming into force this April.

The new PPE Regulation which comes into force next month has significant implications for construction companies. PPE Regulation (EU) 2016/425 takes effect on 21 April, following a two-year transition period. Replacing the 1992 PPE Directive, the regulation is designed to ensure fair competition across the EU and to bring personal protective equipment in line with current legislation.

Products certified to the 1992 Directive can still be sold up until 21 April 2019, but manufacturers must certify products to the new regulation after that date, to ensure they can still be sold. The regulation will apply to the entire supply chain, with manufacturers, importers, distributors and retailers having the same obligations.

One key change is that hearing protection will move from PPE Category II to Category III, to become Complex PPE. As well as being examined by a notified body, such as BSI Group, which will issue an EC Type-examination certificate for each product, Category III products must be manufactured under a quality management system, to ensure production performance. This system must be assessed yearly by a notified body.

According to the latest figures from the HSE, based on figures from the Labour Force Survey between 2014/15 and 2016/17, an estimated 20,000 workers suffer from work-related hearing problems caused, or made worse by, their working environment.

The new PPE Regulation will not change employers' obligations to measure noise levels, provide medical check-ups for workers, or supply them with hearing protection. However, construction firms will now need to check their suppliers' product certification and ask for details on manufacturing processes and quality assurance systems.

Reputable manufacturers, suppliers and distributors should be happy to share this information and support clients, with PPE audits for example, to reassure them that their PPE meets the latest standards.

It has always been important that PPE is tested to current standards. In coming years, it will be equally important to ensure this equipment continues to be compliant and that supply chains are ready for the changes brought about by the new PPE Regulation.

Source: [Construction Manager](#)



## CONSTRUCTION STAND-DOWN TARGETS MENTAL HEALTH

Workers across the whole of the UK's construction sector will take part in a safety stand-down in April to discuss mental wellbeing and plant safety.

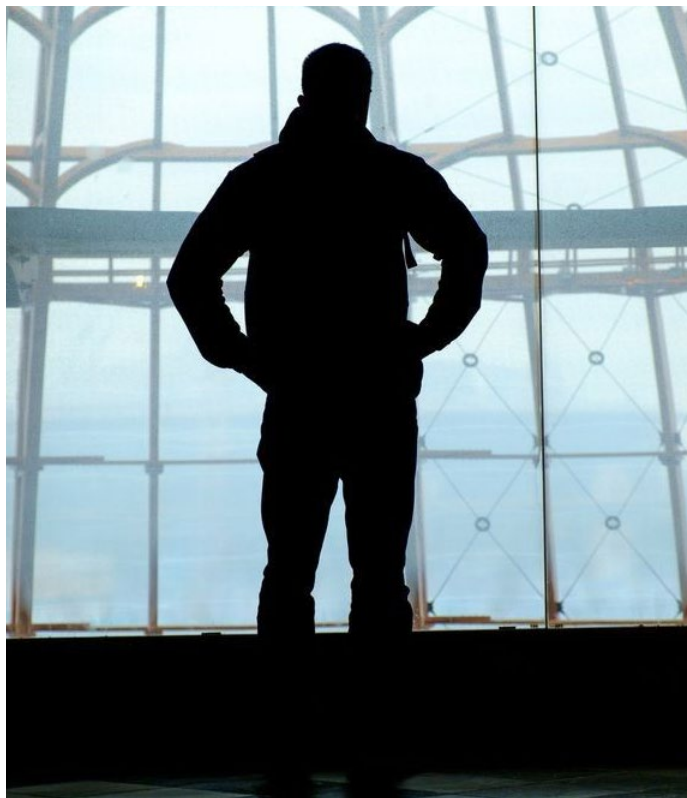
Last April more than 60,000 people working in the infrastructure industry downed tools in the first campaign, called Stop. Make a Change. More than 50 major clients, contractors and materials suppliers participated and many of them made commitments to help tackle mental health, respiratory health, plant safety and fatigue.

This year the initiative has been extended to the whole construction sector "to increase the impact and share the best practice that has been developed more widely", said campaign organiser the Civil Engineering Contractors Association (CECA).

Events will take place over a two-week period, from 16 to 28 April. Those organisations that took part last year voted to promote mental health and wellbeing and plant safety in 2018.

In its briefing for employers, the CECA recommends that participating companies decide on their commitments by the end of February. It says they should be "realistic and deliverable, sufficiently challenging to improve performance, measureable, and signed off by an appropriate leader within the organisation".

Stop. Make a Change is supported by the Construction Industry Training Board (CITB) through its structured fund, which allocates sums between £100,000 and £3m to initiatives by employers registered with the body.



Source: [losh Magazine](#)

## BSG BYTES

What are 'BSG Bytes'?

BSG Bytes are a series of short videos discussing topical industry Health and Safety matters.

**BSG Byte - Dave Dursley**

Our BSG Byte about Edge Protection on a Construction Site is now available to view on BSG's Secure Area. In the video, we meet with Dave Dursley, BSG's Regional Manager for Bristol and South Wales, who explains:

- What are the working at height regulations?
- What is the European Standard for edge protection?
- What should I use?
- Can I use Heras fencing or similar as edge protection?

Members can view the BSG Byte by logging into the '[BSG Secure Information Area](#)'.

What's next?

In April, BSG will be releasing a BSG Byte featuring Chris Chapman, BSG's Head of CDM Services and Technical Support Manager for BSG. In this video, Chris answers:

- What are the main duties of a director?
- What are the best ways to install a good safety culture within an organisation?
- What help is there available to directors?

Do you have a question you would like answered?

Please contact the marketing team if there is a health & safety topic or question that you would like discussed on T: 0300 304 9090 E: [marketing@bsgltd.co.uk](mailto:marketing@bsgltd.co.uk)



Dave Dursley, Regional Manager, Bristol & South Wales Region



Chris Chapman, Technical Support Manager

# BSG BYTES



## RISK ASSESSMENT AND METHOD STATEMENTS COURSE



### BSG RISK ASSESSMENT SOFTWARE

BSG launched its new risk assessment software in January 2018. We have created over 70 different types of pre-configured risk templates for a vast range of construction tasks.

Each template includes its own set of unique control measures relevant to the construction work being assessed and a risk evaluation matrix that automatically calculates scores based on risk severity and likelihood.

We are pleased to announce that BSG members will be able to learn about and use BSG's new risk assessment software while on our risk assessment and method statements course.

### BSG RISK ASSESSMENT AND METHOD STATEMENTS COURSE

#### WHO IS IT FOR?

This half day course aims to put emphasis on risk assessment in the workplace and to enable employers and employees to meet the requirements of the Management Regulations 1999 and the Health and Safety at Work etc. Act 1974 in respect of a safe system and safe place of work.

#### WHAT WILL YOU LEARN?

At the completion of the course the candidate will have an understanding of the practical implications of risk assessment techniques. A thorough understanding of the specific requirements and the need for Risk Assessments of all work activities.

#### Hazard Identification Techniques

- The ability to categorise risk
- An understanding of the need for ongoing monitoring and review
- The necessity to prepare method statements to satisfy the requirement for a safe system and safe place of work, and the point at which that requirement becomes essential.

#### GROUP BOOKINGS

If you have a group of 6 or more employees requiring training, we can run this course on a private basis, at a venue of your choice on a date that suits you. We can tailor the course to meet your needs and requirements.

#### GROUP BOOKING RATES (PER HALF DAY COURSE)

##### At your premises:

BSG Members - £400+VAT

\*Non-BSG Members - £460+VAT\*

##### At BSG Training Centre:

Members - £425+VAT

\*Non-Members - £490+VAT\*

Plus mileages and overnight accommodation if necessary

Fee quoted for members' rates includes 15% discount.

\*Max. 14 delegates per course.

#### 2018 COURSE DATES

Please contact the training department on 0300 304 9080 or email [training@bsgltd.co.uk](mailto:training@bsgltd.co.uk)



#### COURSE VENUE

Our Risk Assessment/Method Statement courses are held at our training centre in Bristol, as well as other various locations around the UK

#### CPD ACCREDITED

Our Risk Assessment & Method Statements course is CPD accredited. Completion of this course entitles you to accrue 4 hours towards your personal annual CPD target. For more information please contact our training department on 0300 304 9080 or email [training@bsgltd.co.uk](mailto:training@bsgltd.co.uk)







## TEEN APPRENTICE FELL 4 M FROM SCAFFOLDING

A scaffolding company has been fined £100,000 after a 16-year-old apprentice joiner fell from a scaffold platform.

Sheffield Magistrates' Court was told that the Bland Scaffolding trainee was standing on a loading bay, passing roof tiles to a colleague who was working on the scaffold platform.

He caught his foot in a gap between the platform and the bay and fell backwards.

He sustained a fractured cheekbone, broken wrist, rib injuries and a deep cut above his eye that needed 13 stitches.

The Health and Safety Executive (HSE) found there was no intermediate guard rail or toe board on the loading bay edge protection.

Bland Scaffolding pleaded guilty to breaching reg 8(a) of the Work at Height Regulations for failing to use a guard rail, toe board or barrier on the working platform.

It was fined £100,000 plus £920 costs.

"A fall from this height could have easily been fatal," said HSE inspector Trisha Elvy.

Article sourced from: [Iosh Magazine](#)

## COMPANY FINED FOLLOWING UNLICENSED ASBESTOS REMOVAL FROM PRIMARY SCHOOL

A construction company has been fined after it carried out unsafe and unlicensed asbestos removal during the refurbishment works in a junior school in Dursley.

Cheltenham Magistrates Court heard how, in October 2016, R F Gardiner Limited removed asbestos in an unsafe manner and did not have the appropriate licence to carry out the work. Operatives working for the company were exposed to high levels of airborne asbestos fibres during the removal work as no water suppression was used and they had not been face-fit tested for the face mask they were wearing.

An enclosure under negative pressure was not set up to contain the asbestos fibres released during the removal and as such asbestos fibres were spread to the surrounding area. Workers also had no way of decontaminating onsite on completion of the work.

An investigation by the Health and Safety Executive (HSE) found that poor planning of the work meant that unsafe and unlicensed asbestos removal work was undertaken.

R F Gardiner Limited of Cirencester Road, Gloucestershire, pleaded guilty to breaching Sections 8(1), 11(1) and 16 of the Control of Asbestos Regulations 2012 and was fined £28,000 and ordered to pay costs of £1,141.80.

Speaking after the hearing, HSE inspector James Lucas said "The company in this case should have ensured appropriate measures were identified during the planning process to include the engagement of a licensed asbestos contractor to carry out correct control measures and safe working practices for the removal of the asbestos."

Article sourced from: [hse.co.uk](#)





## BSG REPORTS 16% INCREASE IN EXCAVATION WORK BREACHES ON CONSTRUCTION SITES

The Building Safety Group (BSG) has reported a 16% rise in ‘Excavation work’ breaches on construction sites. BSG’s figure is based on approximately 11,000 independent inspections conducted for the construction industry over a six month period, comparing Q3 with Q4 in 2017.

Injuries resulting from excavation trench collapses can often be severe and at times fatal. Last year the director of a housing development company, Conquest Homes, was jailed for gross negligence manslaughter after a ground worker was crushed to death in a building site trench. Another company undertaking excavation work was fined for safety breaches when a worker was burned after striking underground electrical cables. Mason Construction (London) Limited pleaded guilty to breaching Regulation 13(1) of CDM regulations 2015 and was fined £25,000.

The HSE advises that construction managers must ensure that excavations are made safe, by setting up trench supports, battering back, fencing or other equally effective measures. Companies should also provide training for staff, highlighting the risks of excavation work. In addition weekly trench inspections should take place, particularly after bad weather.

Paul Kimpton, Managing Director for BSG commented:

*“These types of injuries can be prevented if companies implement safe methods of working, and provide the necessary information and training for workers. Excavations must be properly planned, managed and monitored to ensure no one enters an excavation deeper than 1.2m, without adequate controls in place to prevent a collapse.”*



Paul Kimpton, Managing Director

Paul added: *“Without suitable support, any face of an excavation will collapse; it’s just a matter of when. The steeper and deeper the face, the wetter the soil, the sooner the collapse. Trenchless technologies are available which will help to avoid many of the hazards of excavation, but if a trench is required modern, approved systems can allow the ground support to be installed without the need to enter the excavation.”*

### BSG ACCEPT CARD PAYMENTS

BSG offers card payment facilities with most of the major card providers.

We regret that we are unable to accept payments made by American Express.

We continue to accept payments by bank transfer and cheques. However, depending on your banks T&C’s, paying by card could also be cheaper than paying by BAGS or cheque.

Please contact our accounts department if you would like more details about this service T: 0300 304 9060 E: [TraceyT@BSGlimited.co.uk](mailto:TraceyT@BSGlimited.co.uk)





# BSG TRAINING VENUES



## BSG TRAINING CENTRE, BRISTOL

BSG Training Centre  
5 Pinkers Court, Briarlands Office Park,  
Gloucester Road, Rudgeyway,  
Bristol BS35 3QH  
T: 0300 304 9080



## HOLIDAY INN CARDIFF NORTH, CARDIFF

Holiday Inn Cardiff North M4/J32,  
Merthyr Road,  
Tongwynlais,  
Cardiff CF15 7LH  
T: 02920 522262



## THE SHIP INN, BRISTOL

Thornbury Road, Alveston  
Bristol BS35 3LL  
T: 01454 412521



## THE ALVESTON HOUSE HOTEL

Dauids Lane,  
Alveston BS35 2LA  
T: 01454 415050



## EXETER ST. THOMAS CRICKET & SPORTS COMPANY, EXETER

Brooklands Grace Road, Marsh Barton  
Trading Estate,  
Exeter EX2 8PU  
T: 01392 277497



## BEST WESTERN GABLES HOTEL

Bristol Road, Falfield  
Gloucestershire GL12 8DL  
T: 0844 387 6259



## BROMSGROVE HOTEL & SPA, MIDLANDS

Birmingham Road  
Bromsgrove B61 0JB  
T: +44 (0)121 447 4594

Please visit the training pages on our website [www.bsgltd.co.uk/training](http://www.bsgltd.co.uk/training) to download a course schedule, which includes dates and prices, for each venue.

## MEET THE TRAINING TEAM

T: 030 0304 9080 E: [training@bsgltd.co.uk](mailto:training@bsgltd.co.uk)



Steve Beckwith, Training Manager  
[SteveB@bsgltd.co.uk](mailto:SteveB@bsgltd.co.uk)



Catherine Dyke, Training Co-ordinator  
[Training@bsgltd.co.uk](mailto:Training@bsgltd.co.uk)



Trisha Huntridge, Training Co-ordinator  
[Training@bsgltd.co.uk](mailto:Training@bsgltd.co.uk)



Chris Coosley, Trainer  
[Chris.Cooksley@bsgltd.co.uk](mailto:Chris.Cooksley@bsgltd.co.uk)



Jonathan Hughes, Trainer  
[JonathanH@bsgltd.co.uk](mailto:JonathanH@bsgltd.co.uk)



Alex Hill, Trainer  
[AlexH@bsgltd.co.uk](mailto:AlexH@bsgltd.co.uk)

### CITB CERTIFICATE EXPIRY

A reminder that for the CITB Site Safety Plus scheme, the refresher course must be attended before the certificate expires. Failure to do this will result in the delegate being required to complete the full course again.

For any queries in relation to this, please contact the training team.



### COURSES

Need a course in a location closer to you? If you have a group of 6 or more employees requiring training, we offer all of our courses on a private basis. Held at a venue of your choice on a date that suits you, we can tailor the course to meet your needs and requirements. Contact us and find out more.

### BSG PHONE NUMBERS

BSG have updated their phone system, please see the new numbers below:

Training: 0300 304 9080

Accounts: 0300 304 9060

Marketing: 0300 304 9090

Membership/Technical Support: 0300 304 9070



## BSG PODCASTS

BSG provides a range of Health and Safety podcasts which address critical Health and Safety issues facing the construction industry. You can view them all below:

**Directors Responsibilities:** This podcast provides directors and other senior professionals with a comprehensive understanding of their liabilities and obligations when implementing a Health and Safety strategy. It also offers guidance and practical advice on what should be included in a company's Health and Safety policy.

**Manual Handling:** Chris Chapman summarises the criteria used when carrying out manual handling assessments, the statutory obligations placed on managers and the techniques used to reduce manual handling injuries

**Occupational Health podcast:** Our Occupational Health podcast examines the actions that must be taken to ensure successful management of Occupational Health in the workplace. Focus is directed towards how companies can reduce costs as well as improve the health and wellbeing of construction workers.

**General Legislation podcast:** The Podcast aims to breakdown and simplify the Health & Safety at Work Act by reviewing key legislation which is relevant for the construction industry.

**Special Considerations for Timber Frame Construction podcast:** Chris Chapman explains the extra measures which need to be taken because of the added fire risk.

Members can view the podcasts by logging into the 'BSG Secure Information Area'.

Visit our website to login: <http://www.bsgltd.co.uk/secure/>

Alternatively, please watch our podcasts on our Youtube channel: [https://www.youtube.com/playlist?list=PLESO\\_I4Ec9TeUlcK\\_GXxegFS\\_jvfXdtSQ](https://www.youtube.com/playlist?list=PLESO_I4Ec9TeUlcK_GXxegFS_jvfXdtSQ)

### UPCOMING PODCASTS INCLUDE:

**Dust on Construction Sites:** During the podcast, Chris Chapman will discuss which construction tasks produce high levels of dust and how companies can prevent or adequately control construction dust risks.

**Carrying out a Risk Assessment:** Chris Chapman will summarise the key requirements needed in a risk assessment, including the things you need consider when making the assessment. He will also examine how you set realistic controls and monitor the effectiveness of the assessment.

**The Dangers of Vibration:** Chris Chapman will highlight the dangers of vibration to the body, identify the different systems of measuring and managing exposures and explain how to measure work exposure limits.

## TRAINING COURSE STARTING SOON...

- Site Management Safety Training Scheme Refresher (2 days) - 16 & 23 March 2018 (Bristol), 24 & 25 April 2018 (Midlands) & 11 & 18 June 2018 (Exeter)
- Site Management Safety Training Scheme (SMSTS) (5 days) - 19, 20, 21, 22 & 23 March 2018 (Bristol), 5, 12, 19, 26 April & 3 May 2018 (Exeter), 11, 12, 13, 14 & 15 Jun 2018 (Cardiff) & 4, 11, 18, 25 Jun & 2 Jul 2018 (Midlands)
- Scaffold Inspection and Appreciation (2 days) - 5 & 6 April 2018 (Bristol) & 10 & 11 May 2018 (Bristol)
- Fire Safety (1 day) - 9 April 2018 (Bristol)
- Site Supervisors Safety Training Scheme (SSSTS) (2 days) - 12 & 13 April 2018 (Exeter), 12 & 13 April 2018 (Bristol) & 16 & 17 July 2018 (Midlands)
- CITB Temporary Works Co-ordinator (2 days) - 16 & 17 April 2018 (Cardiff - 20% discount) & 14 & 15 May 2018 (Bristol) & 30 & 31 May 2018 (Exeter)
- Emergency First Aid at Work (1 day) - 17 April 2018 (Bristol)
- CITB Temporary Works Supervisor (1 day) - 18 April 2018 (Cardiff - 20% discount) & 16th May 2018 (Bristol)
- First Aid at Work (3 days) - 1, 8 & 15 May 2018 (Bristol) & 4, 11 & 18 July 2018 (Bristol)
- CITB Health and Safety Awareness (1 day) - 14 May 2018 (Cardiff) & 21 May 2018 (Midlands)



CITB approved centre



Independent  
Asbestos  
Training  
Providers

