

Museum Map



search:
Black Country Living Museum

- Toilets, adapted toilets & baby change
- Food & drink
- Viewpoint
- Picnic area
- Shopping

Black Country Living Museum is committed to disposing of waste responsibly.

All of our waste is processed for recycling or disposal after it is collected from the Museum. Please use the bins provided to dispose of your rubbish, including recycling, as this will be separated once collected.



Access Guide

Please ask for a free access map from visitor reception or view online: bclm.com/access



6
BRADBURN & WEDGE GARAGE



8
DRIFT MINE



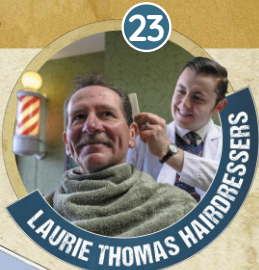
80
CRICKET FIELD BRICKWORKS



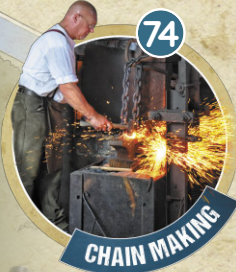
34
ELEPHANT & CASTLE PUB



37
1930S DOMESTIC ROOMS



23
LAURIE THOMAS HAIRDRESSERS



74
CHAIN MAKING



77
BOAT DOCK



Safety Information

Please take care on uneven surfaces, be aware of moving vehicles, don't climb or play on exhibits, and refrain from feeding or touching the animals. We ask that children are supervised by an adult at all times.

For first aid or assistance, please ask any member of staff.
In case of emergency call our Duty Manager on 07788 666161.

Smoking is permitted in designated zones only.

Map Key

- 1 Visitor Centre - Entrance and Exit
- 2 Café Black Country
- 3 Museum Shop
- 4 Changing Places facility
- 5 Museum Conference & Learning Centre
- 6 Bradburn & Wedge Motor Garage
- 7 The Vehicle Sheds
- 8 The Drift Mine
- 9 Racecourse Colliery
- 10 Newcomen Engine
- 11 Toll House
- 12 Jerushah (Tilted Cottage)
- 13 Pitt's Cottage
- 14 Lench's Oliver Shop
- 15 Folkes Park
- 16 Folkes Park Playground

- 17 Cast Iron Houses
- 18 Lea Road Infant Welfare Centre
- 19 Stanton's Music Shop
- 20 West Bromwich Building Society
- 21 Marsh & Baxter
- 22 E. Minett's Ladieswear
- 23 Laurie Thomas Hairdressers
- 24 Burgin's Newsagents
- 25 Spring Hill Post Office
- 26 Langer's Army & Navy Stores
- 27 Dudley Weighbridge Office
- 28 The Conway Garage
- 29 Hut 14 (RAF Hut)
- 30 Halesowen and Hasbury Co-op
- 31 Fairground (seasonal)
- 32 The Paddock
- 33 The Workers' Institute & Café

- 34 Elephant & Castle Pub
- 35 Gripton's Radio Stores
- 36 A. Preedy & Sons Tobacconists
- 37 1930s Domestic Rooms
- 38 A. Hartill Motorcycles
- 39 Humphrey Brothers Builders' Merchants
- 40 H. Morrall's Gentlemen's Outfitters
- 41 Hobbs' and Sons Fish & Chip Shop
- 42 St. James's School
- 43 The Albion Depot
- 44 The Builder's Yard and Office
- 45 The Penfold Letter Box
- 46 Canal Street Bridge
- 47 T. Cook's Sweet Shop
- 48 Veal's Baker's Shop
- 49 The Bakery
- 50 Pawnbroker's Shop

- 51 The Village Fried Fish Shop
- 52 Adey's Greengrocer's Shop
- 53 The Hardware & Ironmonger's Shop
- 54 The Canal Arm and Basin
- 55 Gregory's General Store
- 56 Gregory's Kitchen & Brew House
- 57 Anchor Maker's House
- 58 Back Yard Chain Shop
- 59 Emile Doo's Chemist Shop & Physic Garden
- 60 Providence Chapel
- 61 Bottle & Glass Inn
- 62 Carter's Yard and Stables
- 63 Sidebotham's Steel Trap Works
- 64 The Limekilns
- 65 Station Road Cottages
- 66 Nailmaking Workshop
- 67 The Coal Yard

- 68 Limelight Cinema
- 69 The Back-to-Backs
- 70 Ironworker's Office
- 71 Anchor Forge
- 72 Brass Foundry
- 73 Blacksmith's Shop
- 74 Chain Making Shop
- 75 Rolling Mill
- 76 Factory Junction Bridge
- 77 The Boat Dock & Boat Collection
- 78 Joe H. Smith & Sons (Oldbury) Ltd.
- 79 J.H. Lavender Aluminium Foundry
- 80 Cricket Field Brickworks
- 81 Dudley Canal Tunnel Boat Trips (separate organisation)